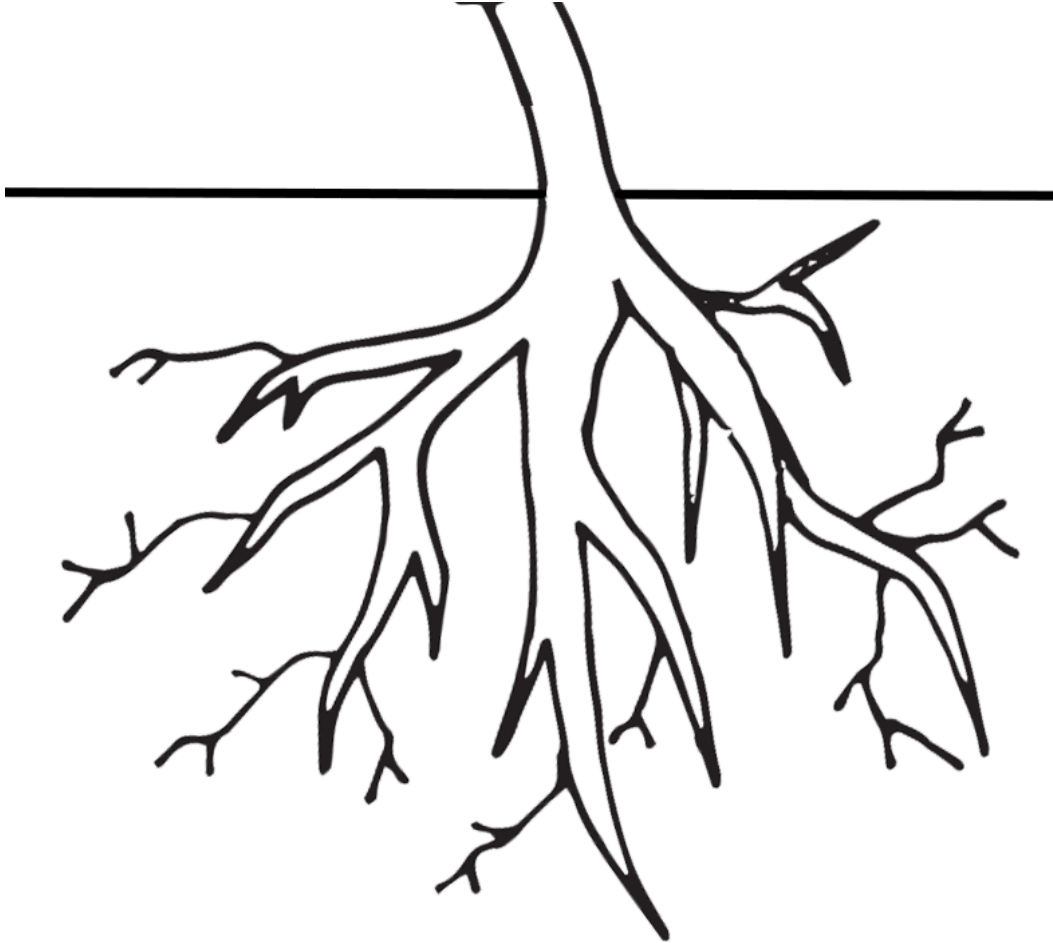


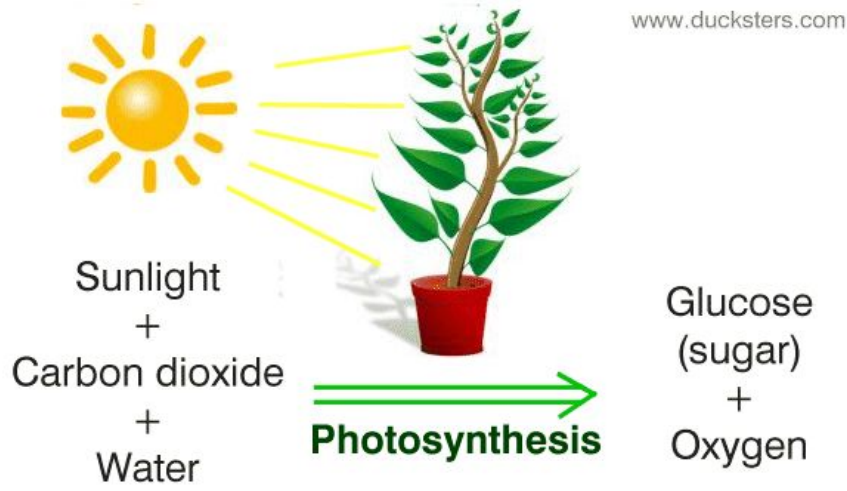
Step-by-Step Guide to Drawing the Different Parts of a Flower

1. First we are going to draw the **roots** of our plant and then the stem. Draw the **stem** however tall you like but make sure to leave room for the flower. How do the roots and the stem help the plant survive?

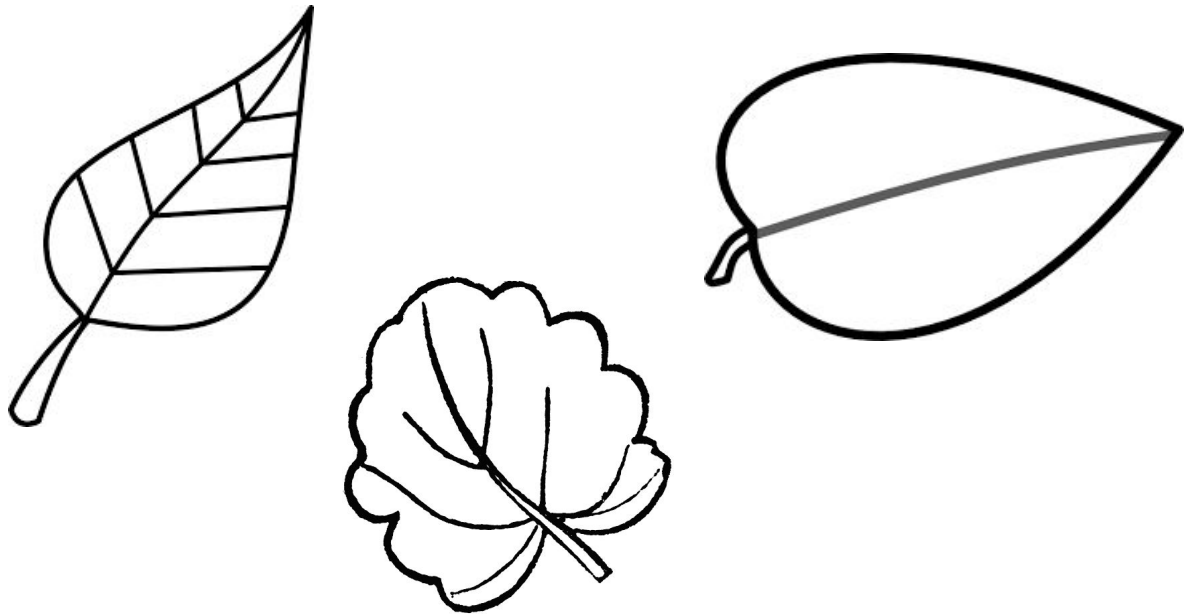


The roots and the stem help the plant stand up tall. They also allow water and food to move through the plant.

2. Next we are going to add some **leaves** onto the stem. Why do you think a plant needs leaves to survive?

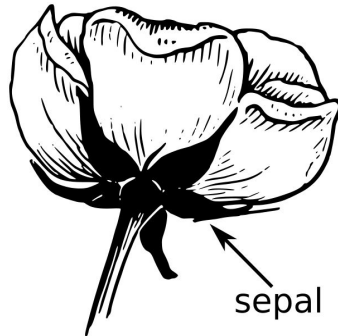


Here are some example leaves for your plant



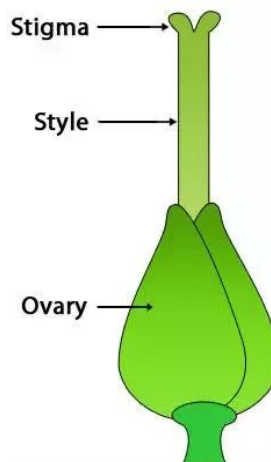
Leaves make food for the plant! They take in sun, carbon dioxide, and water and through a process called photosynthesis they make food (glucose/sugar) that they use to grow and oxygen - which we use!

3. Now we are going to draw the **sepal** at the top of the stem. Why do you think the sepal is important to the flower?



The sepal may look like a leaf, but its job is to support the petals when the flower is in bloom.

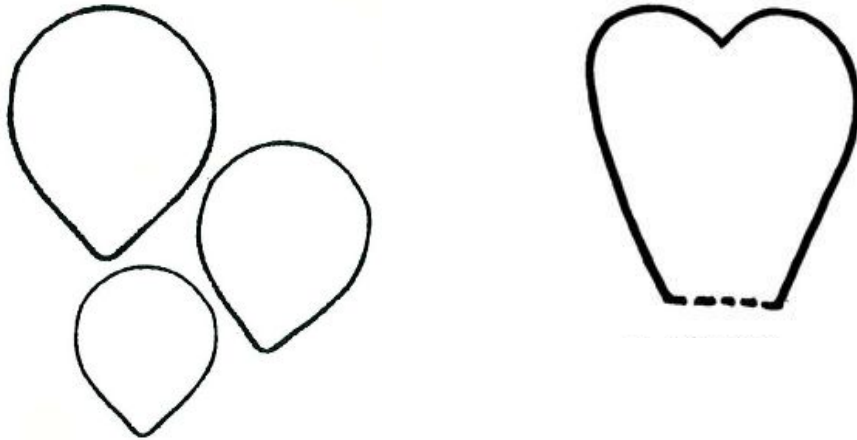
4. Next we are going to draw the **carpel**, also known as a pistil on the top of the sepal we just drew. This part includes the stigma, style, and ovary. Have you noticed this on a flower? How do you think this part helps the plant survive?



This is the female part of the flower. The ovary is where the plant will either grow a fruit or seed. The style connects the ovary to the stigma. The stigma catches pollen from other plants.

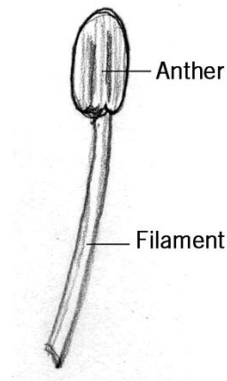
5. Then we will add some **petals** on top of the sepal. Why does a flower need petals?

Below are some example petals.



Petals use color and shape to attract animals to the flower for pollination. Pollination is important for plant reproduction and can also occur by wind and rain.

6. Last we will draw the **stamen** which connects to the ovary. The stamen includes the anther and the filament. Have you noticed this on a flower? How do you think this part helps a plant survive?



Draw as many stamens as petals.

This is the male part of the flower. The anther produces pollen and the filament helps the anther stand up tall.

Not all flowers have all the parts we just drew. We just drew what is called a *perfect flower*. Perfect flowers contain both male and female parts. *Imperfect flowers* contain only female or only male parts.

Try this challenge: Find perfect and imperfect flowers outside!